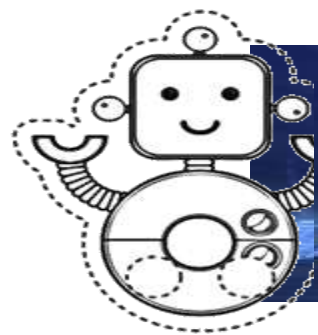




Final Year Projects



A Mini Guide

Group

- ⊙ A group can consist of 2- 5 people at maximum
- ⊙ More than 5 people are not allowed



Group and Presentation

- ⊙ Presentation can be given by minimum two students and maximum by whole group.
- ⊙ Faculty can ask students to come and present , in any order, so you all must prepare



Marking Criteria

Marking Criteria	COMMENTS
<p>1) Adequate Introduction</p> <ul style="list-style-type: none">• Introduction of student and topic• Presentation of appropriate information (detail level)• Appropriate to audience• Good coverage of background issues	
<p>2) Discussion of work achieved</p> <ul style="list-style-type: none">• Clear indication of deliverables achieved• Relationships to plan	
<p>3) Summary and Further work</p> <ul style="list-style-type: none">• Present a good overview of project• Clear direction for future	
<p>4) Clarity of presentation</p> <ul style="list-style-type: none">• Oral presentation, contact with audience• Response to questions• Timekeeping	
<p>5) Use of visual aids</p> <ul style="list-style-type: none">• Clear representation e.g. text size, format• Appropriate use of technology• Visual appeal• Varied representations e.g. use of diagrams, text.....	

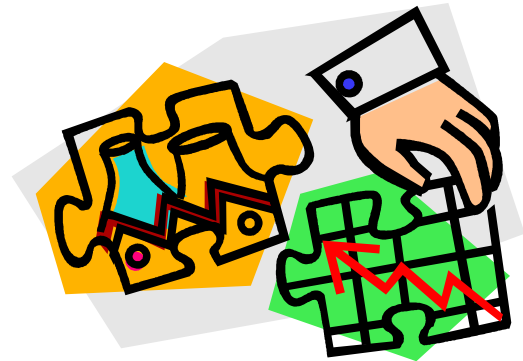
Guide Line For Presentation

① Introduction

Title

Supervisor

Group Member name



Educational Aim of the Project

Reason of Choosing Project

Problem

Motivation and need Focus of Area

Advantages (both Parties)



① Ask yourself x

- ① What is the purpose of the presentation?
- ① Central point?
- ① Who will be attending?
- ① What do they know?
- ① What will interest them?
- ① How much time is available?
- ① What facilities are available

Project Objectives

- ① Phases
- ① Software
- ① Hardware
- ① Alternatives

May include graphs equations , flow charts



Budgeting and Planning



Questions



References

Report

- ⦿ A mini report s also to be submitted by the Members.
- ⦿ It will be attached in the already available files
- ⦿ If you have not submitted file cover , kindly do so
- ⦿ Both project initial presentation and report needs to be approved by your supervisor , before it is represented in represent of Faculty
- ⦿ Hard copy of Presentation and report, signed by your supervisor , needs to be submitted before your presentation
- ⦿

Report

- ① Soft Copy needs to be submitted via website
- ① Swedishchap.weebly.com
- ① Any question can be asked there

① Remember

- ① The presentation is intended as Proposal presentation and can be accepted altered or rejected as per committee decision

Report Format